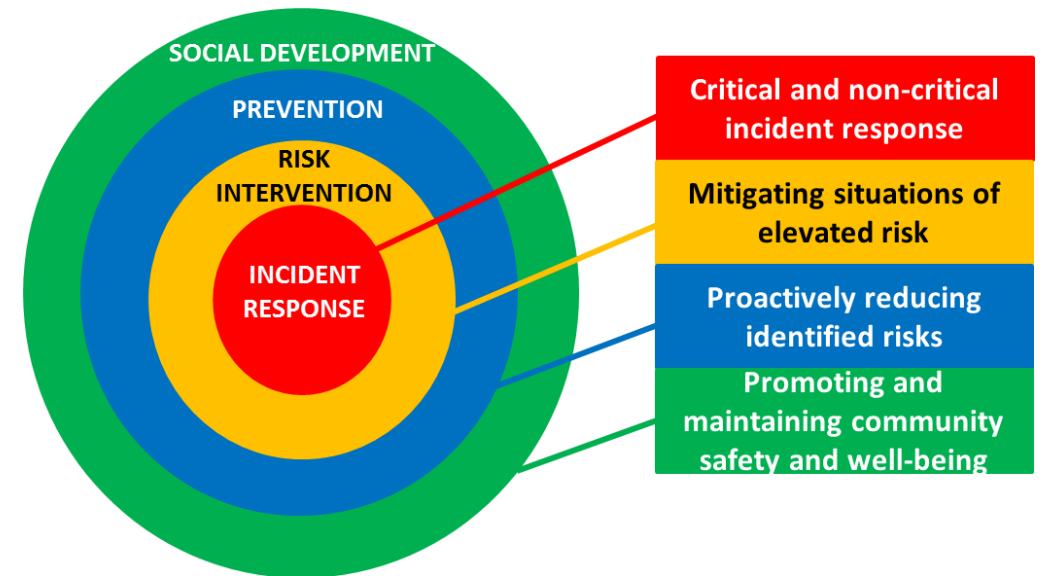


# Dufferin County Community Safety and Well-Being Plan.... and Housing

Anna McGregor  
Co-Chair CSWB Integration Table  
Presentation to DCEC  
October 27, 2021

# Dufferin CSWB Plan

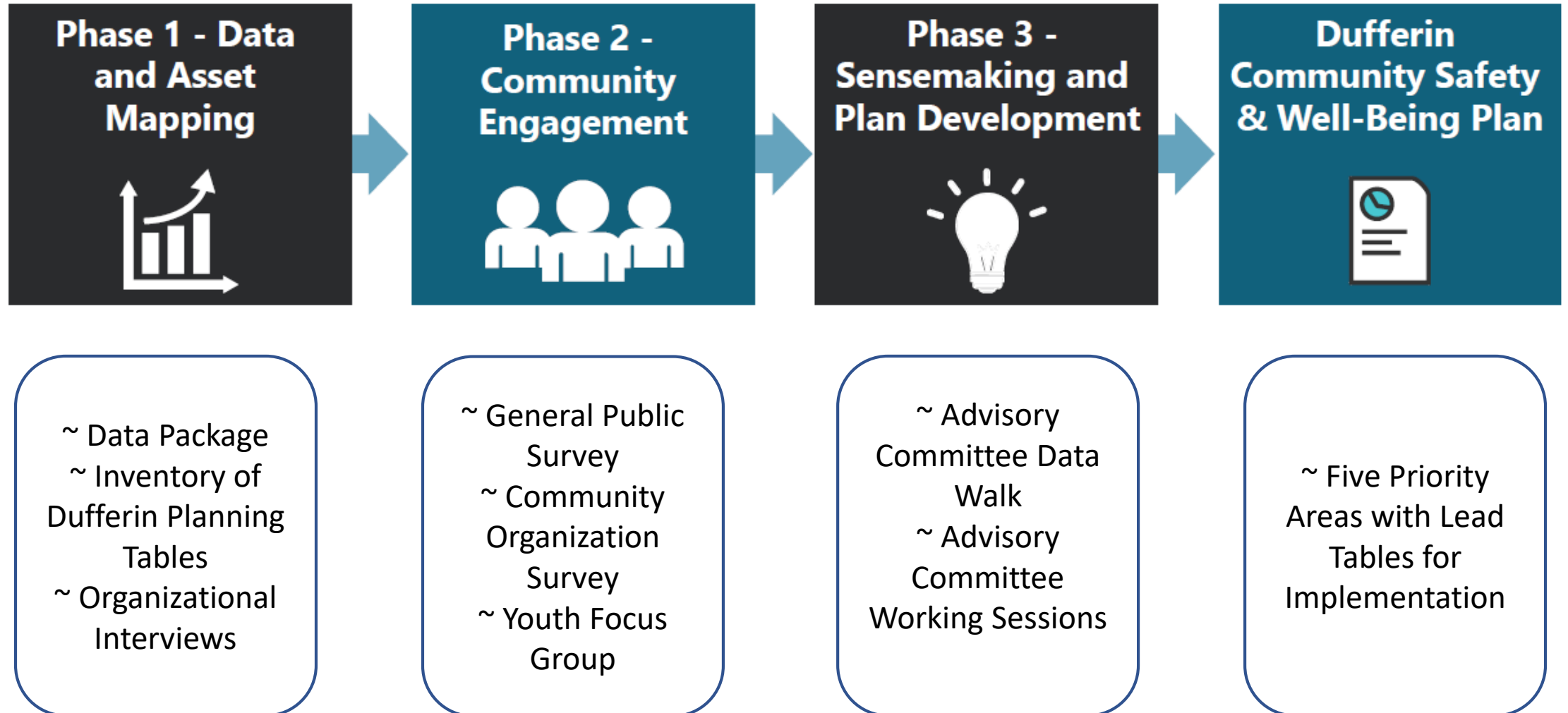
- Mandated Requirement – Police Services Act
- Dufferin chose Four year plan (2021 – 2024)
- Shared plan for all of Dufferin County (upper and lower tiers)
- Focus on risk and protective factors
- Leverage - community resources
- Submitted Before Due Date July 1, 2021



# Dufferin CSWBP Advisory Committee

- Alzheimer's Society of Dufferin County
- Caledon/Dufferin Victim Services
- Canadian Mental Health Association Peel Dufferin
- Community Living Dufferin
- The County of Dufferin (Community Services and Paramedics)
- DC Moves/DCEC
- Dufferin Area Family Health Team
- Dufferin Child and Family Services (DCAFS)
- Dufferin Community Foundation
- Dufferin OPP
- Dufferin Situation Table
- Family Transition Place
- Headwaters Communities in Action (HCIA)
- Services and Housing in the Province (SHIP)
- White Owl Native Ancestry Association

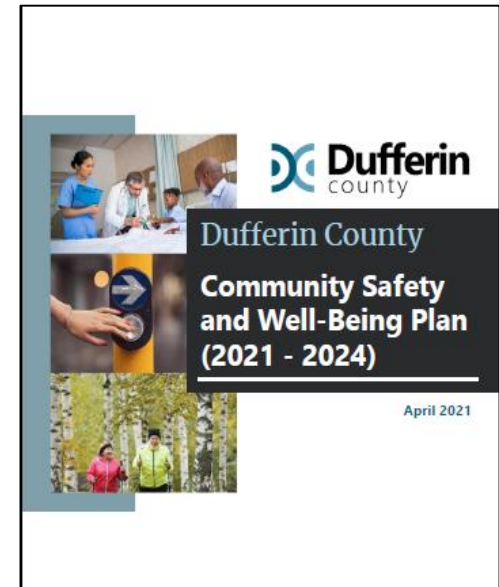
# How Was It Done?



# Priority Areas for the CSWB Plan

- Mental Health and Well-Being
- **Housing and Homelessness – common to DCEC**
- Substance Use and Addiction
- Discrimination, Marginalization and Racism
- Community Safety and Violence\* Prevention

\* Gender-based Violence and Family and Domestic Violence Prevention



# Focus of Dufferin's CSWB Plan

Priority Area	Focus
Mental Health and Well-Being	<ul style="list-style-type: none"><li>• Expand access to mental health services and supports</li><li>• Improve care</li></ul>
Housing and Homelessness	<ul style="list-style-type: none"><li>• Address housing affordability, availability and equity</li><li>• Prevent housing instability and homelessness</li><li>• Maintain, and where possible, improve housing</li><li>• Meet a range of complex community needs</li></ul>
Substance Use and Addiction	<ul style="list-style-type: none"><li>• Reduce the harms related to substance use and/or addictive behaviours</li><li>• Expand access to substance use and addiction services and supports</li><li>• Improve care</li></ul>
Discrimination, Marginalization and Racism	<ul style="list-style-type: none"><li>• To be determined</li></ul>
Community Safety and Violence* Prevention	<ul style="list-style-type: none"><li>• Crime</li><li>• Mobility safety</li><li>• Prevention of domestic and family violence</li></ul>

# Why Does Housing Keep Coming Up

Homeless Enumeration October 2016 – 78 people

- <https://www.dufferincounty.ca/sites/default/files/housing/20000-Homes-Results-Report-2016.pdf>

Homeless Enumeration May 2018 – 44 people

- <https://www.dufferincounty.ca/sites/default/files/housing/20000-Homes-Results-Report-2018.pdf>

Homeless Enumeration April 2021 – 23 people

- <https://www.dufferincounty.ca/sites/default/files/housing/Dufferin%20County%202021%20Point-in-Time%20Count%20Results%20Report.pdf>
- Point-in-Time Count (23) closely reflects number of homeless individuals reported on the March 2021 By-Name-List (26). Vast majority of the individuals encountered during the count were already on the BNL. (A BNL is a real-time list of all people experiencing homelessness in a community, who want to be linked to services and work with service providers.)
  - Q2 July – Sept 2021 for 3 months - 40 emergency accommodation 'events' (several clients used services more than once) for 57 nights in emergency motel accommodation provided by the Dufferin Emergency Motel Program - excludes stays at FTP and Choices shelters
  - Homeless means without permanent address/residence and includes those who would be in emergency accommodation.

# What Do We Need to Work On

- **Put Money in the Right Place** - costs more to keep people in the homelessness system than to house them, raise awareness (slide 2 and 3)
- **Diversion** – identify immediate alternative housing arrangements (even when/if there is capacity in the shelter system)
- **Housing First Approach** – prioritize providing permanent housing with minimum conditions or barriers (partnered with local shelters to provide housing allowances)
- **Heavy Emphasis on Supports not just bed stays** – mental health and addictions
- **Increases in Funding** – federal and provincial increases and the realignment of municipal funding (several layers of government)
- **Data Informed Decision Making** – By-Name-List (BNL) and Centralised Wait List for Community Housing
- **Mental Health and Addictions Support** – really, really need more health supports for vulnerable population another CSWB priority
- **More collaborations and Partnerships** – Coordinated Access Table (CAT) meet every week, no wrong door approach



# Collaboration and Partnerships

- Canadian Mental Health Association Peel Dufferin (CMHA)
- Choices Youth Shelter
- County of Dufferin – Housing Services
- Dufferin Area Family Health Team (DAFHT)
- Family Transition Place (FTP)
- OPP
- Orangeville Food Bank
- Salvation Army
- Services and Housing In the Province (SHIP)
- The Lighthouse
- White Owl Native Ancestry Association

Above are the main agencies in Dufferin providing services to the homeless and at risk of being homeless population.

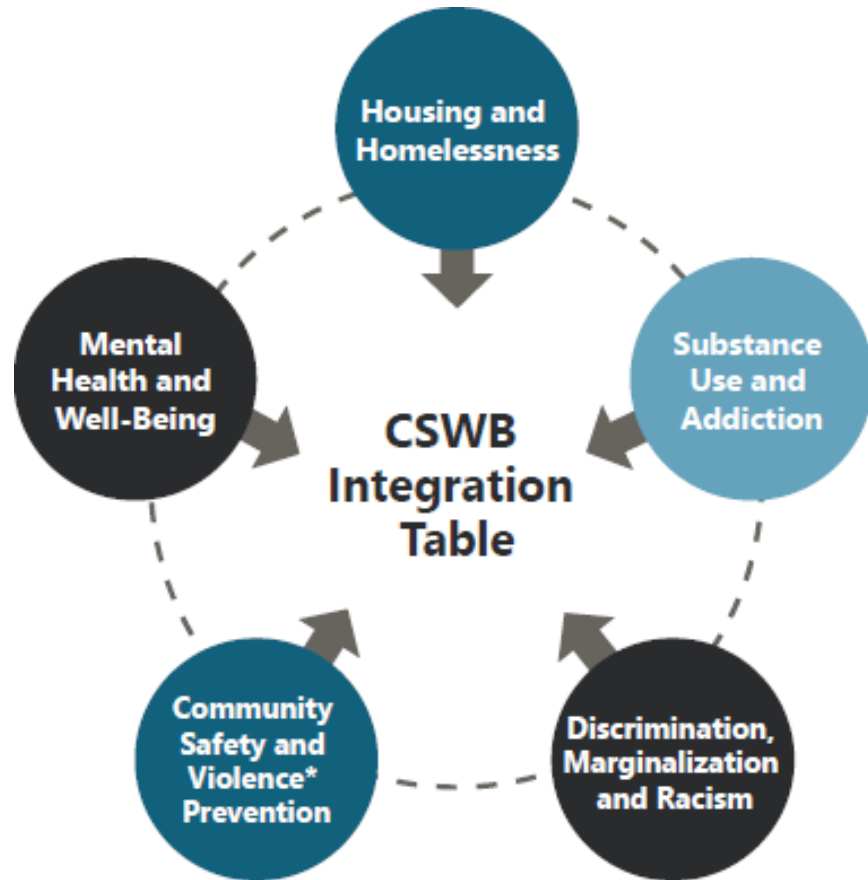
NO one agency or one level of government can tackle this on their own. Continued collaboration is needed.

# Taking the Plan Forward

- Recognition that work is already underway.
- Capitalise on existing collaborations, partnerships and tables.
- Lead Table has been identified for each of the priority areas.
- Community Safety and Well Being Advisory Committee converted into a new Integration Table, to ensure a proactive, balanced and collaborative response across these five priority areas.

# Implementation Structure

Leverage existing tables



Priority Area	Lead Tale
Mental Health and Well-Being	Hills of Headwaters Collaborative Mental Health and Addictions /Community and Mental Health Supports Working Group
Housing and Homelessness	Dufferin County Equity Collaborative Housing & Homelessness Pillar
Substance Use and Addiction	Dufferin Caledon Drug Strategy Committee
Discrimination, Marginalization and Racism	County of Dufferin Diversity, Equity and Inclusion Community Advisory Committee
Community Safety and Violence* Prevention	NEW table

# Dufferin CSWB Integration Table

- Alzheimer's Society of Dufferin County
- Caledon/Dufferin Victim Services
- Canadian Mental Health Association Peel Dufferin
- Community Living Dufferin
- The County of Dufferin (Community Services [Co-Chair Agency](#) and Paramedics)
- DC Moves/DCEC
- Dufferin Area Family Health Team
- Dufferin Child and Family Services (DCAFS)
- Dufferin Community Foundation
- Dufferin OPP
- Dufferin Situation Table
- Family Transition Place
- Headwaters Communities in Action (HCIA) [Co-Chair Agency](#)
- Probation and Parole Service
- Services and Housing in the Province (SHIP)
- White Owl Native Ancestry Association

# One Year Action Plan

<b>Actions</b>	<b>Timeline</b>
Presentations to potential Lead Tables	Oct-21
Prepare an agenda template for Integration Table meetings	Dec-21
Confirm Lead Tables for the implementation of the CSWBP	Dec-21
Confirm the Performance Measurement Dashboard	Dec-21
Review reporting templates from each Lead Table and identify what, if any, further data are required and create an output dashboard for the annual report	Dec-21
Review work plans from Lead Tables	Dec-21
Develop a sustainability plan (i.e. no external facilitator)	Mar-22
Review year one performance measures	May-22
Report to County Council	Jul-22
Receive status updates from Lead Tables	Ongoing
Identify new and emerging community safety and well-being priorities (i.e. gaps and duplications)	Ongoing
Identify opportunities for Lead Tables to collaborate (gives and gets)	Ongoing
Identify funding opportunities to implement the Community Safety and Well-Being Plan priorities	Ongoing
Communicate to the community	Ongoing
Share information about the work of the CSWBP with other tables/committees	Ongoing

Dufferin Community Safety and Well-Being Report:

[Dufferin County Community Safety and Well-Being Plan \(2021-2024\) 05-13-2021](#)

Thank you !